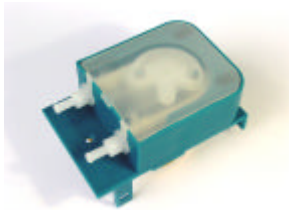




The entire range of peristaltic pumps

Peristaltic Pumps with constant flow (KONSTA)

Constant flow for detergent use



III: KONSTA®

KONSTA® PS20 N

(Art.- No. 910145)

Tubematerial: Norprene

Max. Volumeflow: 3,0 I/h

Protection Class: IP X0

as 24V Pump:

KONSTA24 PS40N (Art.-No. 910167)

KONSTA® PLUS PS20GN

(Art.- No. 910146)

Tubematerial: Norprene

Max. Volumeflow: 1,5 I/h

Protection Class: IP 42



Constant flow for rinse-aid use (max. Counter pressure 3 bar)

KONSTA® KLAR PS10 Si

(Art.- No. 910159)

Tubematerial: Silikon

Max. Volumeflow: 1,5 I/h

Protection Class: IP X0

KONSTA® PLUS KLAR PS10 GSi

(Art.- No. 910158)

Tubematerial: Silikon

Max. Volumeflow: 1,5 I/h

Protection Class: IP 42

max. counter pressure 3 bar

Peristaltic Pumps with constant flow (REGO)

Variable flow for detergent use

REGO® PS10 RN

(Art.- No. 910166)

Tubematerial: Norprene

Volumeflow: 0,14 to 1,4 I/h

Protection Class: IP 42

REGO® PS20 RN

(Art.- No. 910162)

Tubematerial: Norprene

Volumeflow: 0,28 to 2,8 I/h

Protection Class: IP 42

Variable flow for rinse-aid use (max. Counter pressure 3 bar)



III: KONSTA®PLUS, REGO®

REGO® KLAR PS10 RSi

(Art.- No. 910155)

Tubematerial: Silikon

Volumeflow: 0,14 to 1,4 I/h

Protection Class: IP 42

